



*Shri Dhaneshwari Manav Vikas Mandal's,*  
**SVP COLLEGE OF PHARMACY (B.PHARM)**

At Hatta, Zero Phata, Tq. Basmat, Dist.Hingoli-431705

### 7.1.2) THE INSTITUTION HAS FACILITIES & INITIATIVES FOR

1. Alternative Source Of Energy & Conservation Measure
2. Management Of The Various Types Of Degradable And Nondegradable Waste
3. Water Conservation
4. Green Campus Initiatives
5. Disabled-Friendly, Barrier Free Environment.

#### 7.1.2.1) Alternative Source Of Energy & Conservation Measure



Solar Plate

*Shivani*  
PRINCIPAL  
S.V.P.College of Pharmacy (B.Pharm)  
Hatta, Tq. Basmat Dist. Hingoli



DTE CODE:2564

*Shri Dhaneshwari Manav Vikas Mandal's,*  
**SVP COLLEGE OF PHARMACY (B.PHARM)**

At Hatta, Zero Phata, Tq. Basmat, Dist.Hingoli-431705



*H. V. V.*  
**PRINCIPAL**  
S.V.P.College of Pharmacy (B.Pharm)  
Hatta, Tq. Basmath Dist. Hingoli





DTE CODE:2564

*Shri Dhaneshwari Manav Vikas Mandal's,*  
**SVP COLLEGE OF PHARMACY (B.PHARM)**

At Hatta, Zero Phata, Tq. Basmat, Dist.Hingoli-431705



UPS Power Inventor

*Shivani*  
PRINCIPAL  
S.V.P.College of Pharmacy (B.Pharm)  
Hatta, Tq. Basmath Dist. Hingoli



DTE CODE:2564

*Shri Dhaneshwari Manav Vikas Mandal's,*  
**SVP COLLEGE OF PHARMACY (B.PHARM)**

At Hatta, Zero Phata, Tq. Basmat, Dist.Hingoli-431705

**7.1.2.2) Management Of The Various Types Of Degradable And Nondegradable Waste.**



Degradable Waste Management

*Shivani*  
PRINCIPAL  
S.V.P.College of Pharmacy (B.Pharm)  
Hatta,Tq.Basmath Dist.Hingoli

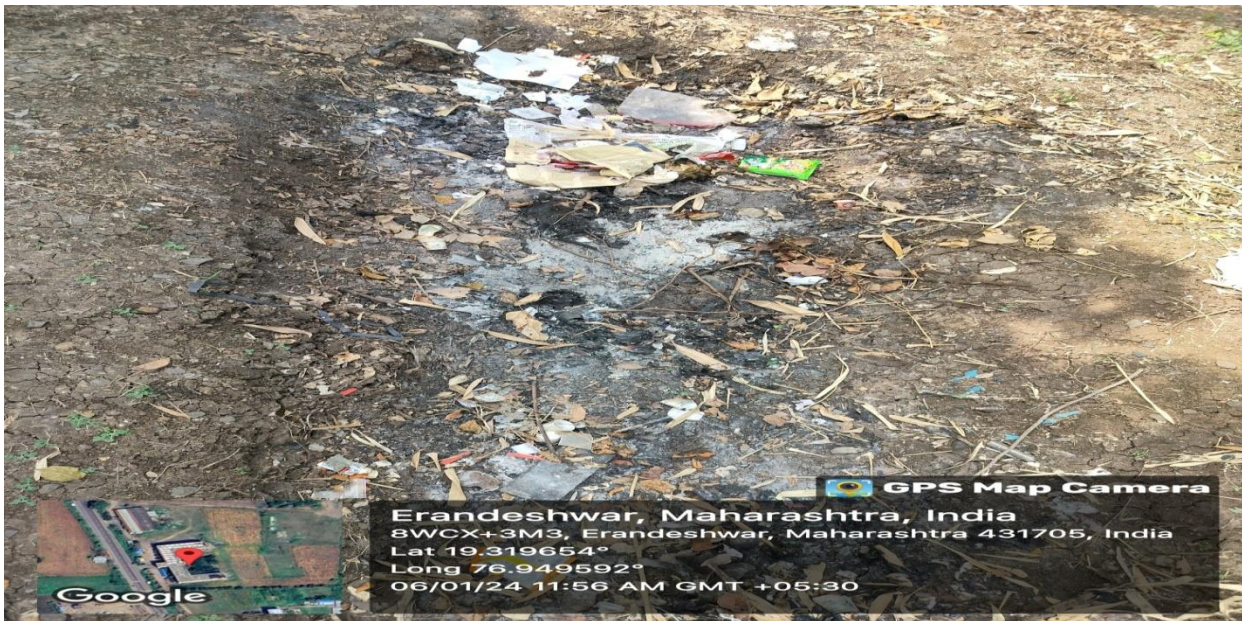




DTE CODE:2564

*Shri Dhaneshwari Manav Vikas Mandal's,*  
**SVP COLLEGE OF PHARMACY (B.PHARM)**

At Hatta, Zero Phata, Tq. Basmat, Dist.Hingoli-431705



Nondegradable Waste.



Nondegradable Waste

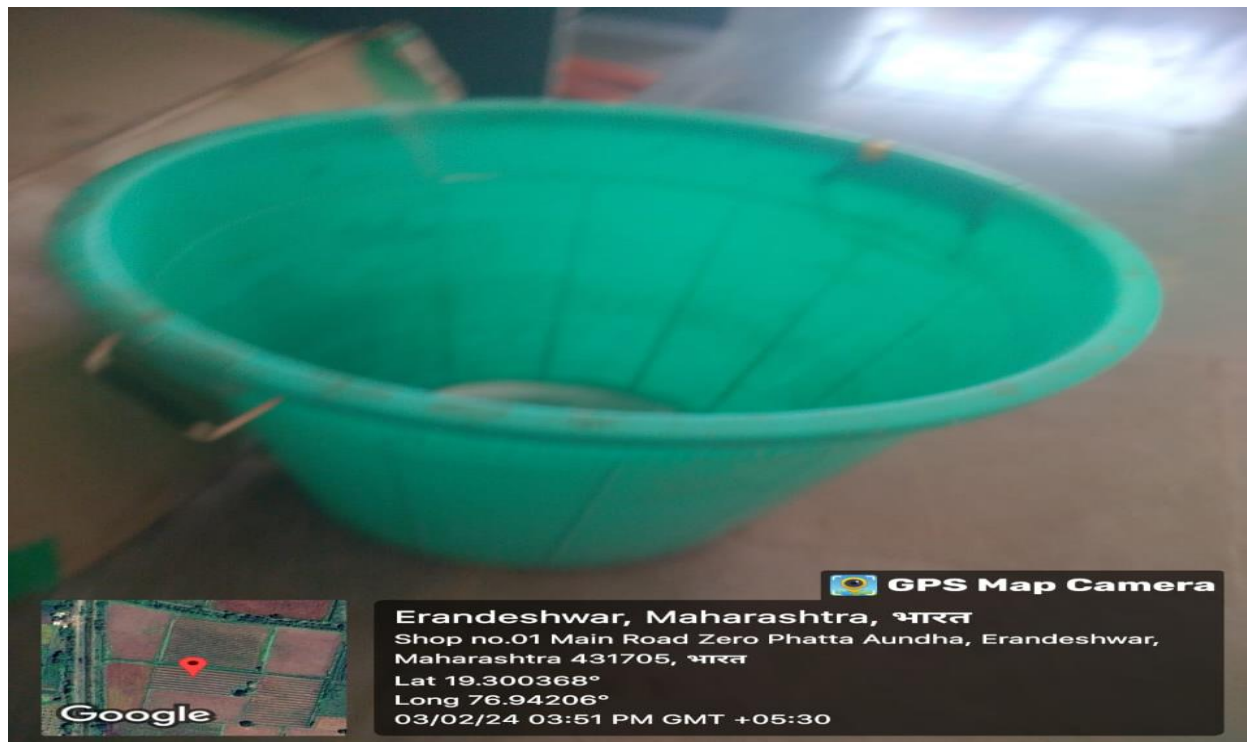
*Shri Dhaneshwari*  
**PRINCIPAL**  
S.V.P.College of Pharmacy (B.Pharm)  
Hatta, Tq. Basmath Dist. Hingoli



DTE CODE:2564

*Shri Dhaneshwari Manav Vikas Mandal's,*  
**SVP COLLEGE OF PHARMACY (B.PHARM)**

At Hatta, Zero Phata, Tq. Basmat, Dist.Hingoli-431705



Degradable Waste Management

*Shivani*  
PRINCIPAL  
S.V.P.College of Pharmacy (B.Pharm)  
Hatta, Tq. Basmath Dist. Hingoli





DTE CODE:2564

*Shri Dhaneshwari Manav Vikas Mandal's,*  
**SVP COLLEGE OF PHARMACY (B.PHARM)**

At Hatta, Zero Phata, Tq. Basmat, Dist.Hingoli-431705



Liquid Waste Management

*Prinvar*  
**PRINCIPAL**  
S.V.P.College of Pharmacy (B.Pharm)  
Hatta, Tq. Basmath Dist. Hingoli





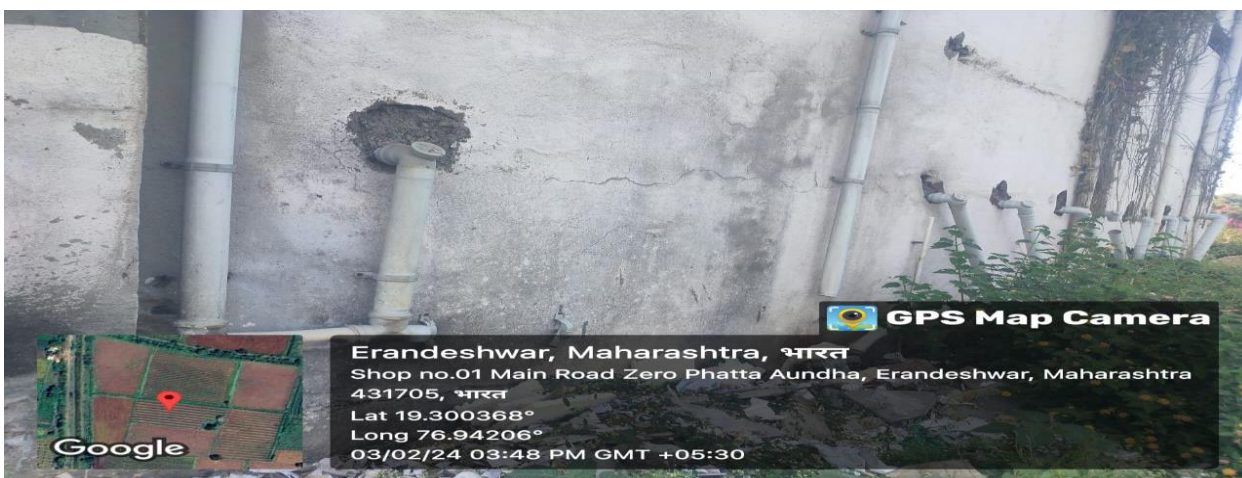
DTE CODE:2564

*Shri Dhaneshwari Manav Vikas Mandal's,*  
**SVP COLLEGE OF PHARMACY (B.PHARM)**

At Hatta, Zero Phata, Tq. Basmat, Dist.Hingoli-431705



Liquid Waste Management



Liquid Waste Management

*Shrihari*  
**PRINCIPAL**  
S.V.P.College of Pharmacy (B.Pharm)  
Hatta, Tq. Basmath Dist. Hingoli





*Shri Dhaneshwari Manav Vikas Mandal's,*  
**SVP COLLEGE OF PHARMACY (B.PHARM)**

At Hatta, Zero Phata, Tq. Basmat, Dist.Hingoli-431705

### 7.1.2.3) WATER CONSERVATION.

#### Water Conservation Facilities In The Institution



Bore Well

*Shri Dhaneshwari*  
**PRINCIPAL**  
S.V.P.College of Pharmacy (B.Pharm)  
Hatta, Tq. Basmath Dist. Hingoli





DTE CODE:2564

*Shri Dhaneshwari Manav Vikas Mandal's,*  
**SVP COLLEGE OF PHARMACY (B.PHARM)**

At Hatta, Zero Phata, Tq. Basmat, Dist.Hingoli-431705

## Construction Of Tanks



Water Harvesting tank (Capacity-1000L)



Water Harvesting tank (Capacity-1000L)

*Shri Dhaneshwari*  
**PRINCIPAL**  
S.V.P.College of Pharmacy (B.Pharm)  
Hatta, Tq. Basmath Dist. Hingoli



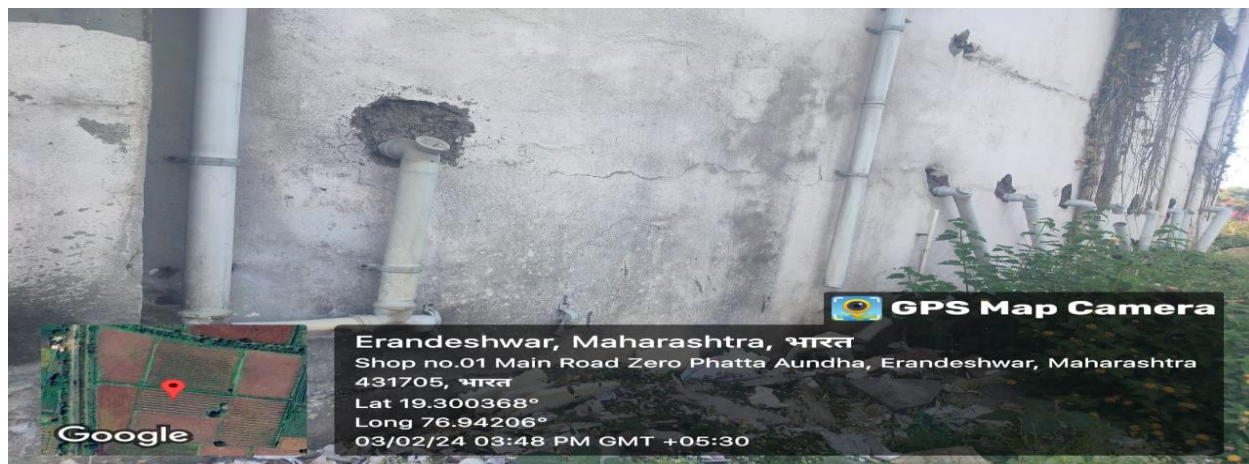


DTE CODE:2564

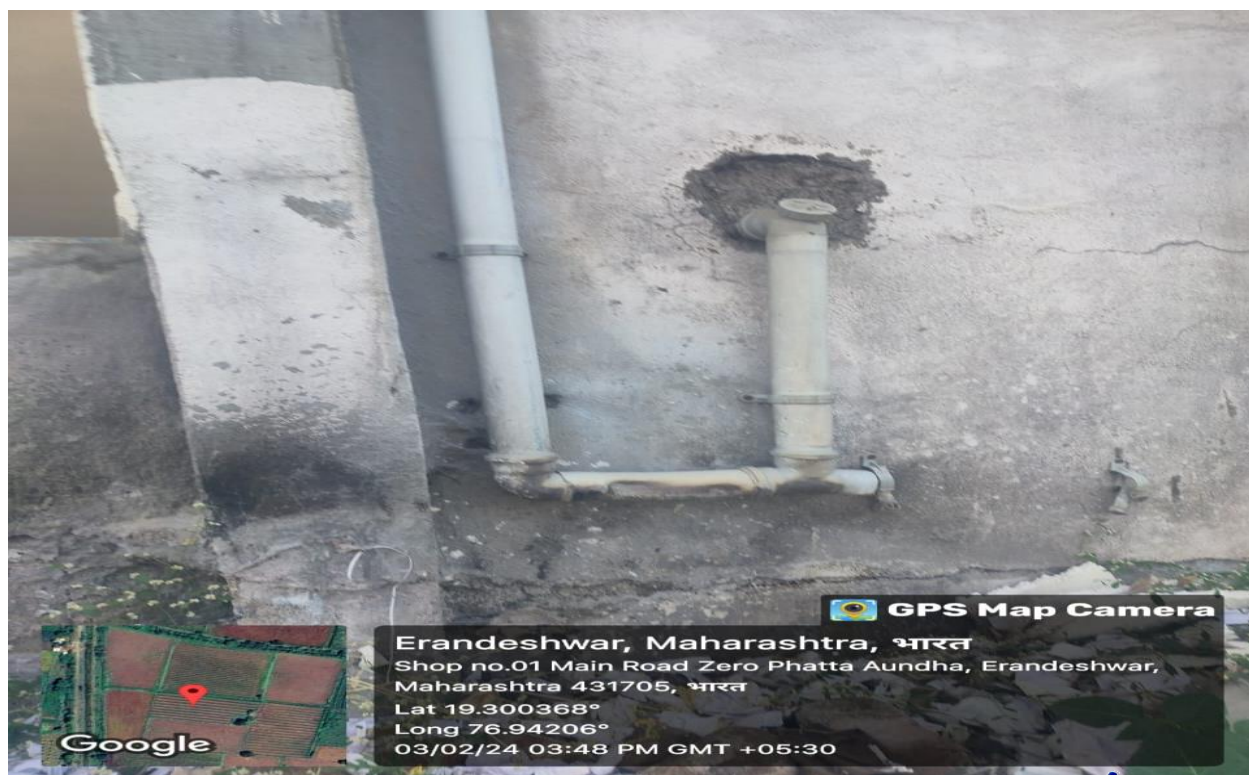
*Shri Dhaneshwari Manav Vikas Mandal's,*  
**SVP COLLEGE OF PHARMACY (B.PHARM)**

At Hatta, Zero Phata, Tq. Basmat, Dist.Hingoli-431705

**Rein Water Harvesting Campus:-**



Water Harvesting Campus



Water Harvesting Campus

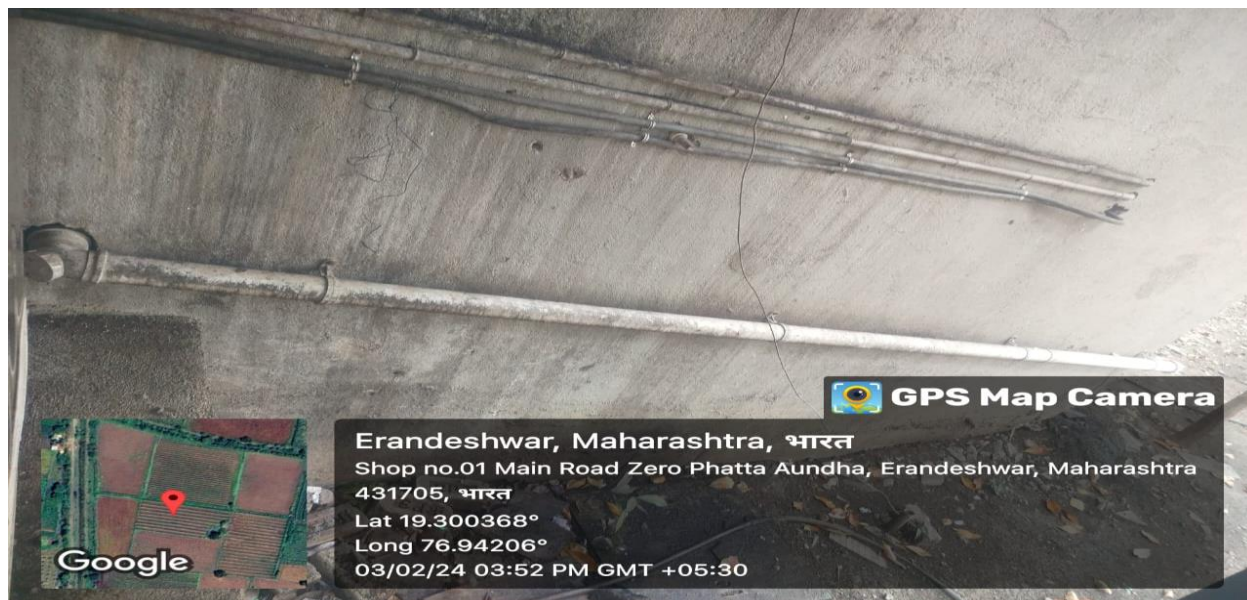
*Shivani*  
PRINCIPAL  
S.V.P.College of Pharmacy (B.Pharm)  
Hatta,Tq.Basmath Dist.Hingoli



DTE CODE:2564

*Shri Dhaneshwari Manav Vikas Mandal's,*  
**SVP COLLEGE OF PHARMACY (B.PHARM)**

At Hatta, Zero Phata, Tq. Basmat, Dist.Hingoli-431705



Water Harvesting Campus



Water Harvesting Campus

*Shrihari*  
PRINCIPAL  
S.V.P.College of Pharmacy (B.Pharm)  
Hatta, Tq. Basmath Dist. Hingoli





DTE CODE:2564

*Shri Dhaneshwari Manav Vikas Mandal's,*  
**SVP COLLEGE OF PHARMACY (B.PHARM)**

At Hatta, Zero Phata, Tq. Basmat, Dist.Hingoli-431705

## Water Harvesting System



Water Ultrafiltration Plant

*Shri Dhaneshwari*  
**PRINCIPAL**  
S.V.P.College of Pharmacy (B.Pharm)  
Hatta,Tq.Basmath Dist.Hingoli



DTE CODE:2564

*Shri Dhaneshwari Manav Vikas Mandal's,*  
**SVP COLLEGE OF PHARMACY (B.PHARM)**

At Hatta, Zero Phata, Tq. Basmat, Dist.Hingoli-431705



Water Filter



Water Filter

*Shivani*  
PRINCIPAL  
S.V.P.College of Pharmacy (B.Pharm)  
Hatta, Tq. Basmath Dist. Hingoli





DTE CODE:2564

*Shri Dhaneshwari Manav Vikas Mandal's,*  
**SVP COLLEGE OF PHARMACY (B.PHARM)**

At Hatta, Zero Phata, Tq. Basmat, Dist.Hingoli-431705



Water Filter

*Shivani*  
PRINCIPAL  
S.V.P.College of Pharmacy (B.Pharm)  
Hatta, Tq. Basmath Dist. Hingoli



*Shri Dhaneshwari Manav Vikas Mandal's,*  
**SVP COLLEGE OF PHARMACY (B.PHARM)**

At Hatta, Zero Phata, Tq. Basmat, Dist.Hingoli-431705

#### 7.1.2.4) GREEN CAMPUS INITIATIVES INCLUDE

##### USE OF BICYCLES/BATTERY POWERED VEHICLES

Due to the restriction of entering motor vehicles in to the campus. The institute will provide the bicycles or battery powered vehicles to students, faculty and visitors in campus as a mode of transport. It is environment friendly and prevents pollution

##### PARKING FACILITIES



Parking Vehicles

*Shivani*  
PRINCIPAL  
S.V.P.College of Pharmacy (B.Pharm)  
Hatta,Tq.Basmath Dist.Hingoli





DTE CODE:2564

*Shri Dhaneshwari Manav Vikas Mandal's,*  
**SVP COLLEGE OF PHARMACY (B.PHARM)**

At Hatta, Zero Phata, Tq. Basmat, Dist.Hingoli-431705



Parking Vehicles



Parking Vehicles

*Principals*  
**PRINCIPAL**  
S.V.P.College of Pharmacy (B.Pharm)  
Hatta, Tq. Basmath Dist. Hingoli



*Shri Dhaneshwari Manav Vikas Mandal's,*  
**SVP COLLEGE OF PHARMACY (B.PHARM)**  
At Hatta, Zero Phata, Tq. Basmat, Dist.Hingoli-431705

**GREEN CAMPUS INITIATIVES INCLUDE**  
**LANDSCAPING WITH TREES AND PLANTS:**

Carbon dioxide neutrality is maintained on the campus by planting different varieties of trees and plants. The green campus concept offers them to take the lead in redefining its environmental culture and developing new paradigms by creating sustainable solutions to environmental, social and economic needs of the mankind.

**4) Green Campus Initiatives**



Green Campus

*Shri Dhaneshwari*  
**PRINCIPAL**  
S.V.P.College of Pharmacy (B.Pharm)  
Hatta,Tq.Basmath Dist.Hingoli





DTE CODE:2564

*Shri Dhaneshwari Manav Vikas Mandal's,*  
**SVP COLLEGE OF PHARMACY (B.PHARM)**

At Hatta, Zero Phata, Tq. Basmat, Dist.Hingoli-431705



Green Campus



Green Campus

*Shri Dhaneshwari*  
**PRINCIPAL**  
S.V.P.College of Pharmacy (B.Pharm)  
Hatta, Tq. Basmath Dist. Hingoli





DTE CODE:2564

*Shri Dhaneshwari Manav Vikas Mandal's,*  
**SVP COLLEGE OF PHARMACY (B.PHARM)**

At Hatta, Zero Phata, Tq. Basmat, Dist.Hingoli-431705



Green Campus

*Shri Dhaneshwari*  
**PRINCIPAL**  
S.V.P.College of Pharmacy (B.Pharm)  
Hatta, Tq. Basmath Dist. Hingoli





DTE CODE:2564

*Shri Dhaneshwari Manav Vikas Mandal's,*  
**SVP COLLEGE OF PHARMACY (B.PHARM)**

At Hatta, Zero Phata, Tq. Basmat, Dist.Hingoli-431705



Green Campus



Green Campus

*Shivani*  
PRINCIPAL  
S.V.P.College of Pharmacy (B.Pharm)  
Hatta,Tq.Basmath Dist.Hingoli



DTE CODE:2564

*Shri Dhaneshwari Manav Vikas Mandal's,*  
**SVP COLLEGE OF PHARMACY (B.PHARM)**

At Hatta, Zero Phata, Tq. Basmat, Dist.Hingoli-431705



Green Campus

*Shri Dhaneshwari*  
**PRINCIPAL**  
S.V.P.College of Pharmacy (B.Pharm)  
Hatta, Tq. Basmath Dist. Hingoli





DTE CODE:2564

*Shri Dhaneshwari Manav Vikas Mandal's,*  
**SVP COLLEGE OF PHARMACY (B.PHARM)**

At Hatta, Zero Phata, Tq. Basmat, Dist.Hingoli-431705



Green Campus

*Shivani*  
PRINCIPAL  
S.V.P.College of Pharmacy (B.Pharm)  
Hatta,Tq.Basmath Dist.Hingoli



DTE CODE:2564

*Shri Dhaneshwari Manav Vikas Mandal's,*  
**SVP COLLEGE OF PHARMACY (B.PHARM)**

At Hatta, Zero Phata, Tq. Basmat, Dist.Hingoli-431705



Green Campus

*Shivani*  
**PRINCIPAL**  
S.V.P.College of Pharmacy (B.Pharm)  
Hatta,Tq.Basmath Dist.Hingoli





*Shri Dhaneshwari Manav Vikas Mandal's,*  
**SVP COLLEGE OF PHARMACY (B.PHARM)**

At Hatta, Zero Phata, Tq. Basmat, Dist.Hingoli-431705

## 5) Friendly Barrier Free Environment



Green Campus



Green Campus

*Shivani*  
PRINCIPAL  
S.V.P.College of Pharmacy (B.Pharm)  
Hatta, Tq. Basmath Dist. Hingoli





DTE CODE:2564

*Shri Dhaneshwari Manav Vikas Mandal's,*  
**SVP COLLEGE OF PHARMACY (B.PHARM)**

At Hatta, Zero Phata, Tq. Basmat, Dist.Hingoli-431705



Green Campus



Erandeshwar, Maharashtra, India  
8W9X+QPP, Erandeshwar, Maharashtra 431705  
Lat 19.319454° 02/10/2023  
Long 76.949159°

Green Campus

*Shri Dhaneshwari*  
**PRINCIPAL**  
S.V.P.College of Pharmacy (B.Pharm)  
Hatta, Tq. Basmath Dist. Hingoli





*Shri Dhaneshwari Manav Vikas Mandal's,*  
**SVP COLLEGE OF PHARMACY (B.PHARM)**

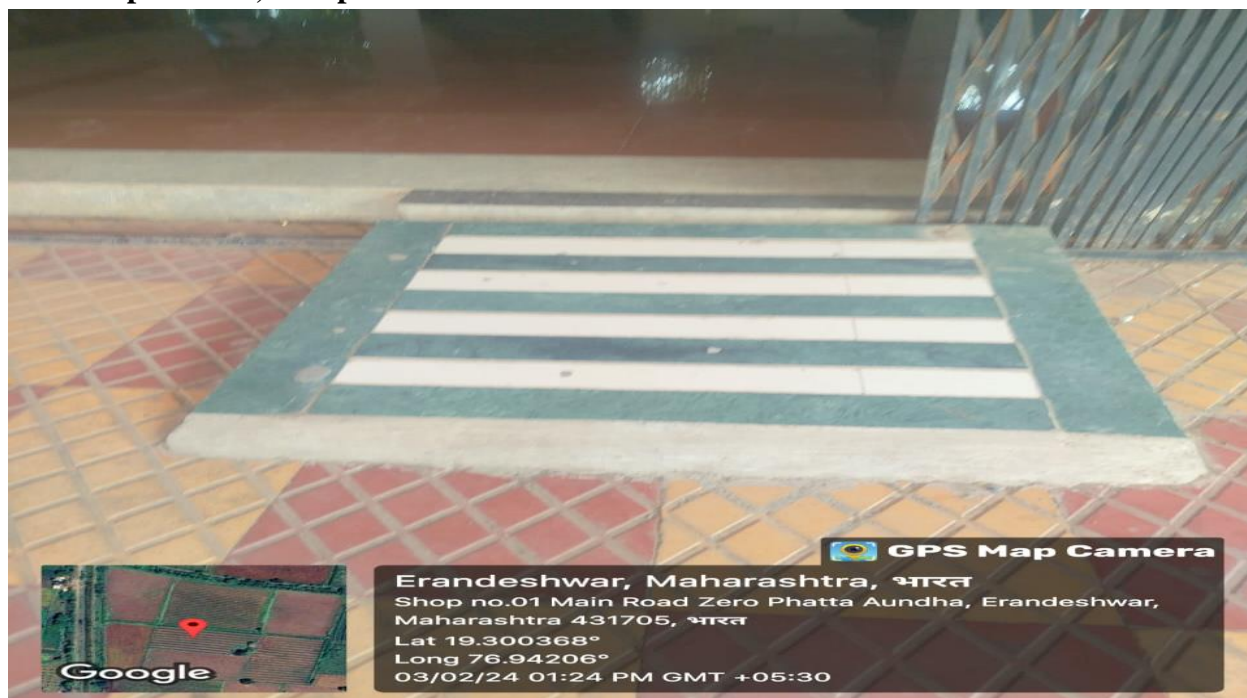
At Hatta, Zero Phata, Tq. Basmat, Dist.Hingoli-431705

**7.1.2.5) THE INSTITUTION HAS FACILITIES AND INITIATIVE FOR  
disable friendly barrier free environment**

**Physical Facilities (For Handicap)**

The institution has disable friendly built environment with ramps/lifts for easy access to classrooms

**Handicap Walker, Ramp**



Handicap Walker, Ramp

*Shri Dhaneshwari*  
**PRINCIPAL**  
S.V.P.College of Pharmacy (B.Pharm)  
Hatta, Tq. Basmath Dist. Hingoli



DTE CODE:2564

*Shri Dhaneshwari Manav Vikas Mandal's,*  
**SVP COLLEGE OF PHARMACY (B.PHARM)**

At Hatta, Zero Phata, Tq. Basmat, Dist.Hingoli-431705



Disability Wheelchair



Handicap Walker, Ramp

*Shrihari*  
**PRINCIPAL**  
S.V.P.College of Pharmacy (B.Pharm)  
Hatta, Tq. Basmath Dist. Hingoli



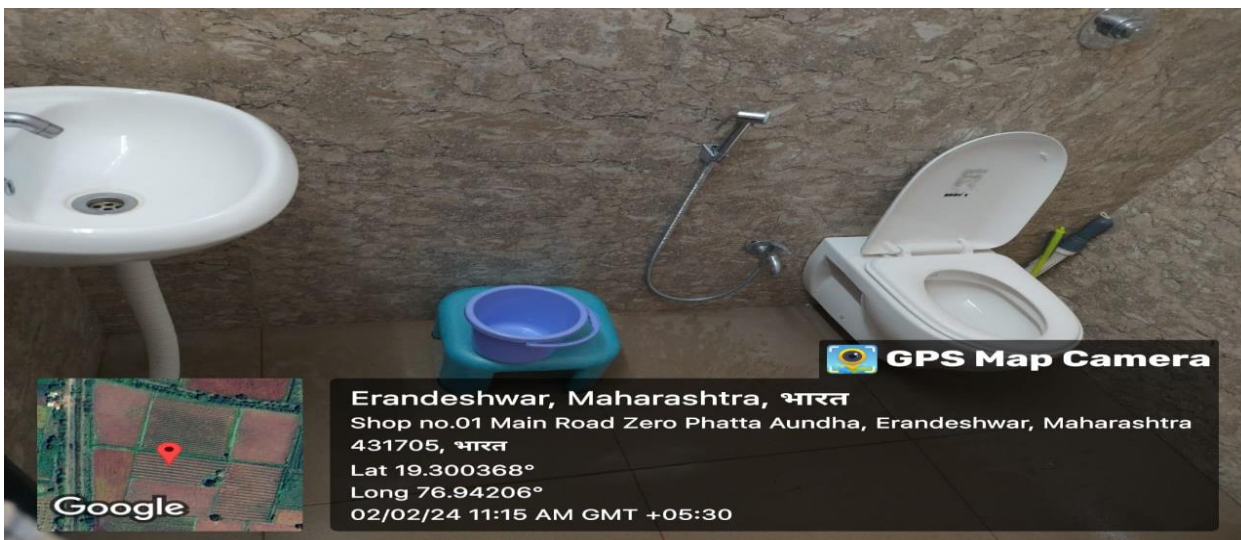


DTE CODE:2564

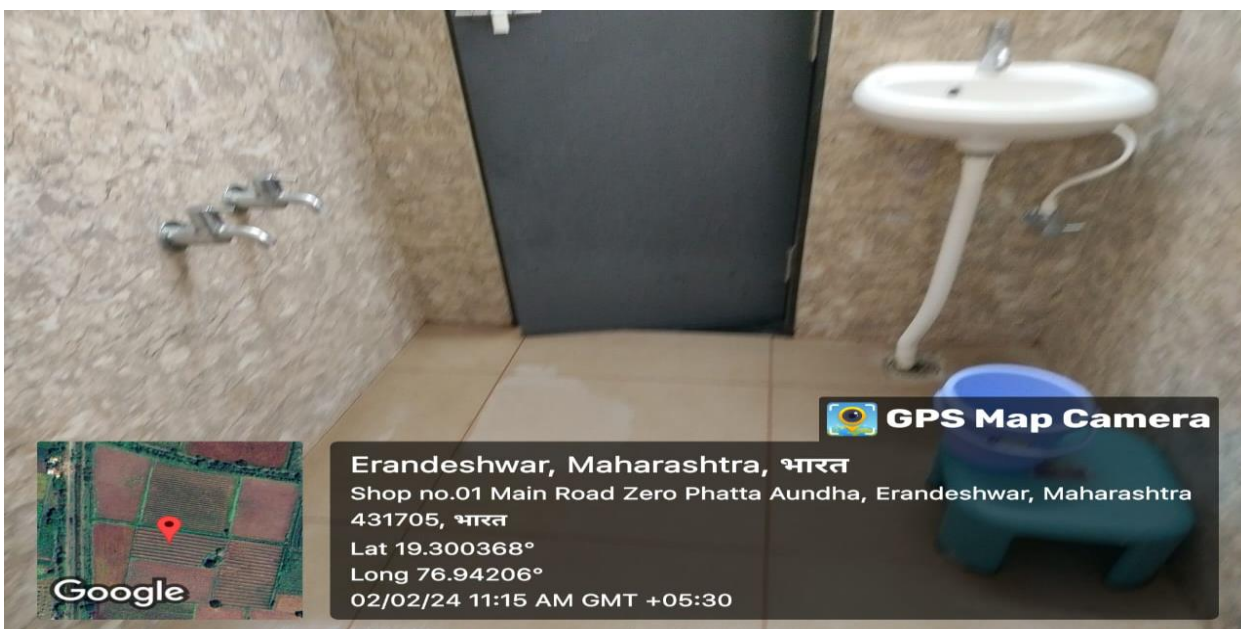
*Shri Dhaneshwari Manav Vikas Mandal's,*  
**SVP COLLEGE OF PHARMACY (B.PHARM)**

At Hatta, Zero Phata, Tq. Basmat, Dist.Hingoli-431705

### Disability Friendly Wash Rooms



Wash Rooms



Wash Rooms

*Shri Dhaneshwari*  
**PRINCIPAL**  
S.V.P.College of Pharmacy (B.Pharm)  
Hatta, Tq. Basmath Dist. Hingoli



DTE CODE:2564

*Shri Dhaneshwari Manav Vikas Mandal's,*  
**SVP COLLEGE OF PHARMACY (B.PHARM)**

At Hatta, Zero Phata, Tq. Basmat, Dist.Hingoli-431705

Ref.No:-

Date: -

Pedestrian friendly pathway



*Shivani*  
PRINCIPAL  
S.V.P.College of Pharmacy (B.Pharm)  
Hatta, Tq. Basmat Dist. Hingoli